

INSTALLATION INSTRUCTIONS

2x6, 26-bit Wiegand

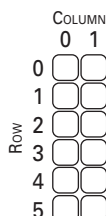
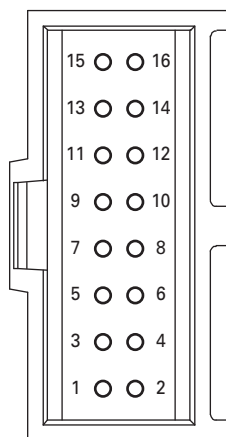
ACTIVE METAL™ KEYPADS

BEYOND DURABLE.™

Pin-Out Configurations:

| Pin No. | Wiegand |
|---------|--------------|
| 1 | +9 to 24 VDC |
| 2 | Aux. Out |
| 3 | — |
| 4 | — |
| 5 | Data 0 |
| 6 | Data 1 |
| 7 | — |
| 8 | — |
| 9 | — |
| 10 | — |
| 11 | — |
| 12 | — |
| 13 | Red LED* |
| 14 | Green LED* |
| 15 | Ground |
| 16 | Ground |

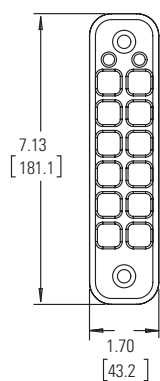
* For 1-wire or 2-wire LED control mode, see item 2 on reverse side



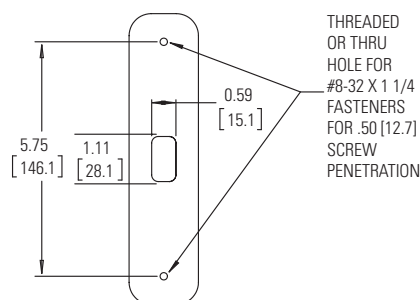
Back view

(mates with Molex® 16-pin female connector part number 90142-0016, not included)

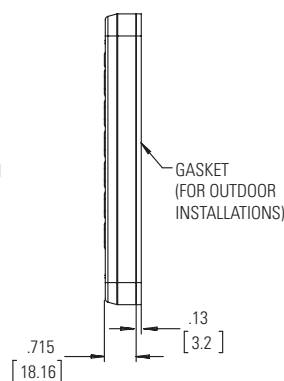
Dimensions / Mounting Diagrams:



KEYPAD FOR MULLION MOUNTING



RECOMMENDED PATTERN FOR MULLION MOUNTING



INCHES [MM]

For outdoor installations use the sealing washers and gasket (provided), and a weatherproof backbox, seal the wire entry locations with silicone and provide a drain hole. In addition, use anti-oxidant grease for wire harness connections.

Mullion Mounting: 0.50" screw penetration depth or through hole

Torque: 8-32 screw (17 Inch Pounds—max)

Sealing Washers and Gasket (included)

Mounting Fasteners NOT included.

Keypad Programming:

Continued on the reverse side.

Design and specifications subject to change without notice due to continuing product improvements



This device complies with Part 15 of the FCC Rules. Operation is subject to the following two conditions:
(1) this device may not cause harmful interference, and
(2) this device must accept any interference received, including interference that may cause undesired operation

800.544.3354

www.ActiveMetal.com

Keypad Programming:

Keypad programming is done within the first 8 seconds of power up. During this time the keypad sensitivity and sound output can be changed, 1-wire or 2-wire LED control set and Site Code and Master Code modified. The 8 second clock is reset after each modification allowing multiple changes to be made within a single power on. After 8 seconds without an entry, the keypad leaves the programming mode indicated by two short beeps. Keypads can be programmed as follows:

- 1.) Power unit up by making appropriate connection (see Connector Pin-out on reverse side).
- 2.) To set LED control wires, enter "7#" for a single LED control wire. Pins 13 and 14 must BOTH be connected to this single control wire:
 - +5V = Green LED on
 - 0V = Red LED onEnter "8#" for two LED control wires. Pull pin 13 to ground to turn on Red LED. Pull pin 14 to ground to turn on Green LED.
- 3.) To change the sensitivity or sound settings, within the first eight (8) seconds of power up, enter one of the keys below followed by the # key.
 - a.) Press 1 # — Low sensitivity, Sound On
 - b.) Press 3 # — Med sensitivity, Sound On
 - c.) Press 5 # — High sensitivity, Sound On
 - d.) Press 2 # — Low sensitivity, Sound Off
 - e.) Press 4 # — Med sensitivity, Sound Off
 - f.) Press 6 # — High sensitivity, Sound Off

NOTE: If nothing is pressed the unit will default to the last setting entered. The factory setting is Medium sensitivity, Sound on (b). Incomplete entries are timed out in approximately 8 seconds and indicated by 2 long beeps.

- 4.) To change the Site Code or Master Code, the Master Code must be entered. The Master Code must be entered as 5 digits, and terminated by either "#" or "*" as follows:
 - a.) The Master Code followed by "#" grants access to update the Site Code.
 - b.) The Master Code followed by "*" grants access to update the Master Code.

The Master Code is factory programmed to "91111". The Site Code is factory programmed to "0". A proper Master Code entry is indicated by three short beeps. An incorrect entry is indicated by 2 long beeps.

- 5.) To modify the Site Code: Upon acceptance of the Master Code terminated with "#" in the first 8 seconds of power up:
 - a.) The user is to enter the desired "Site Code" from 0 – 255

- b.) Press # when complete
- c.) If accepted, user will be given feedback = 3 short beeps. An incorrect entry (number out of range) is indicated by 2 long beeps. An incomplete entry times out in 8 seconds and indicated by 2 long beeps.

- 6.) To change the Master Code: Upon acceptance of the Master Code terminated with "*" in the first 8 seconds of power up:
 - a.) Enter the new Master Code as 5 digits terminated by "#". The Master Code must begin with a 7, 8, or 9 followed by any combination of 4 numeric digits.
 - b.) If accepted, user will be given feedback of 3 short beeps. If an improper Master Code is entered, it is indicated by 2 long beeps. If an incomplete entry is made it is indicated in 8 seconds by 2 long beeps.

Note: If the Master key is unknown or needs to be reset, the unit must be sent back to the factory where the factory code will be entered.

Notes:

- a.) Any loss of power will retain the last stored Sensitivity / Buzzer selection, LED Control Settings and Site Code provided no buttons are activated within the first eight (8) seconds of power up.
- b.) To reset the Sensitivity/Buzzer selection repeat steps one (1) and three (3).
- c.) To reset the Site Code, repeat steps one (1), four (4) and five (5).

Codes:

Factory Default Master Code: **91111**

Factory Default Site Code: **000**

User Master Code: _____

User Site Code: _____